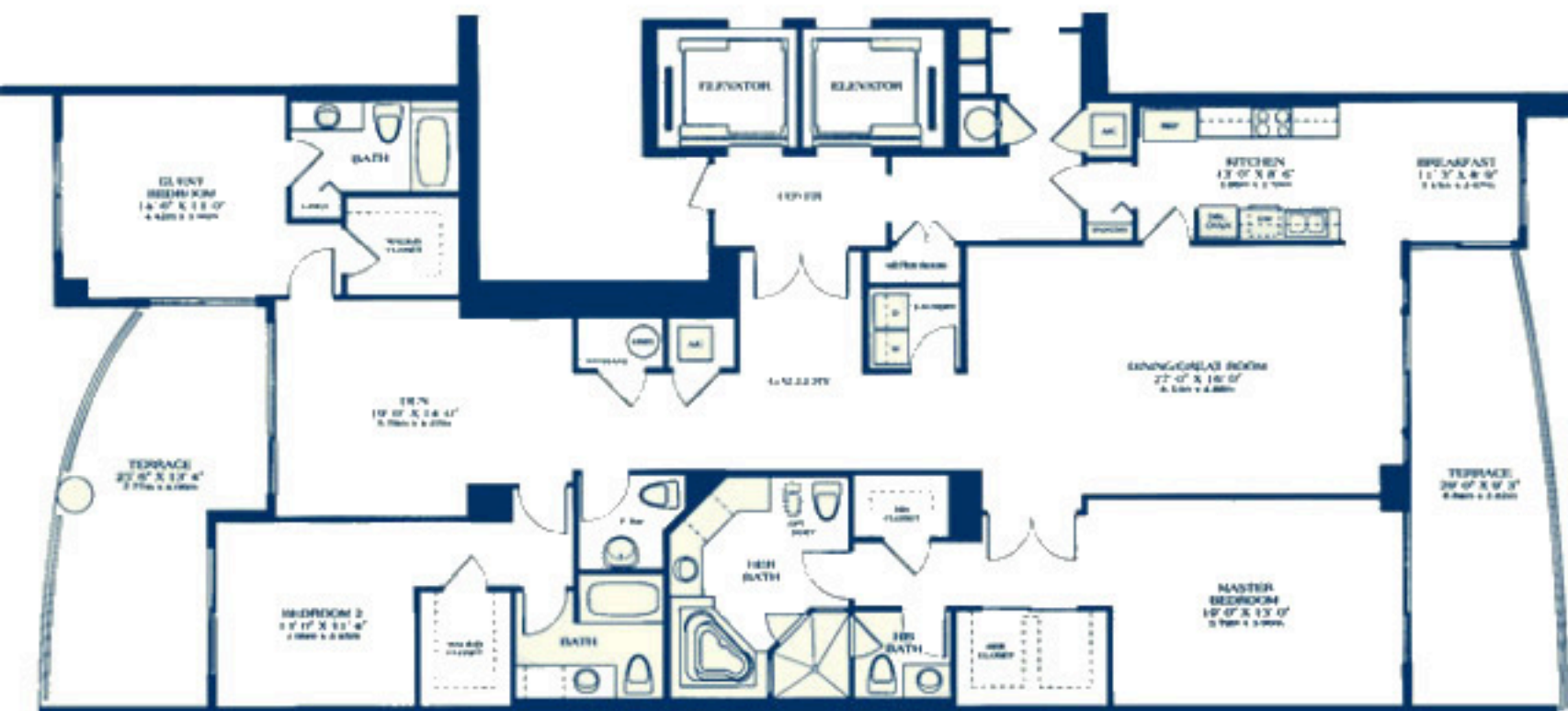


3 BEDROOMS PLUS DEN, 4.5 BATHS

INTERIOR AREA: 2,823 SQ. FT. 262.3 m²

TERRACE AREA: 557 SQ. FT. 51.7 m²

TOTAL AREA: 3,380 SQ. FT. 314.0 m²



* Please note that some homeowners have customized the floorplan to best suit their needs. Subject to errors and omissions. Information obtained from sources deemed reliable but not warranted.

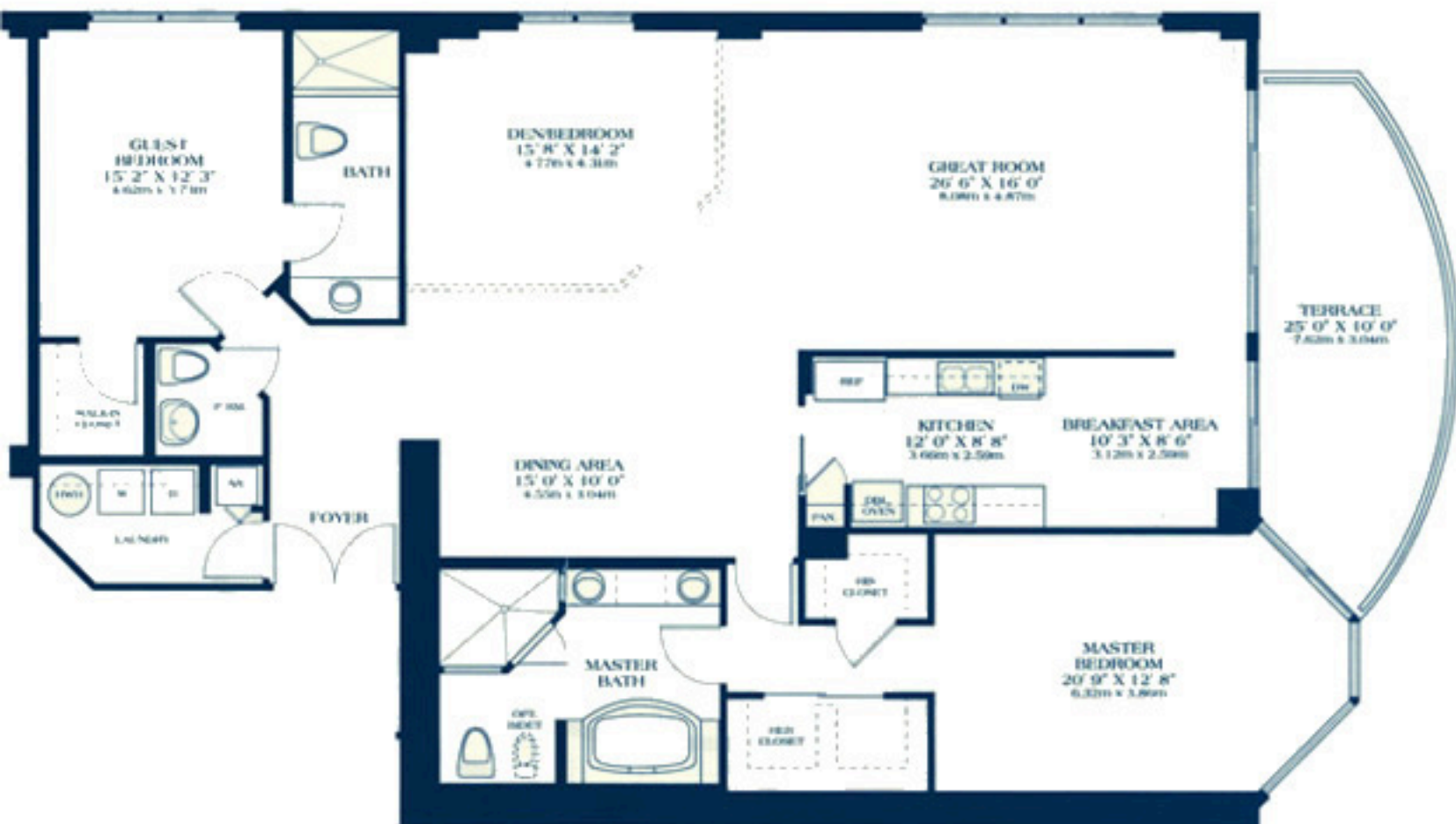
* Please note that some homeowners have customized the floorplan to best suit their needs. Subject to errors and omissions. Information obtained from sources deemed reliable but not warranted.

BRISTOL

2 BEDROOMS PLUS DEN, 2.5 BATHS

INTERIOR AREA: 2,318 SQ. FT. 215.3 m²
TERRACE AREA: 219 SQ. FT. 20.3 m²

TOTAL AREA: 2,537 SQ. FT. 235.6 m²



* Please note that some homeowners have customized the floorplan to best suit their needs. Subject to errors and omissions. Information obtained from sources deemed reliable but not warranted.

* Please note that some homeowners have customized the floorplan to best suit their needs. Subject to errors and omissions. Information obtained from sources deemed reliable but not warranted.

2 BEDROOMS PLUS DEN, 2 BATHS**INTERIOR AREA:** 1,836 SQ. FT. 170.5 m²**TERRACE AREA:** 261 SQ. FT. 24.2 m²**TOTAL AREA:** 2,097 SQ. FT. 194.7 m²

* Please note that some homeowners have customized the floorplan to best suit their needs. Subject to errors and omissions. Information obtained from sources deemed reliable but not warranted.